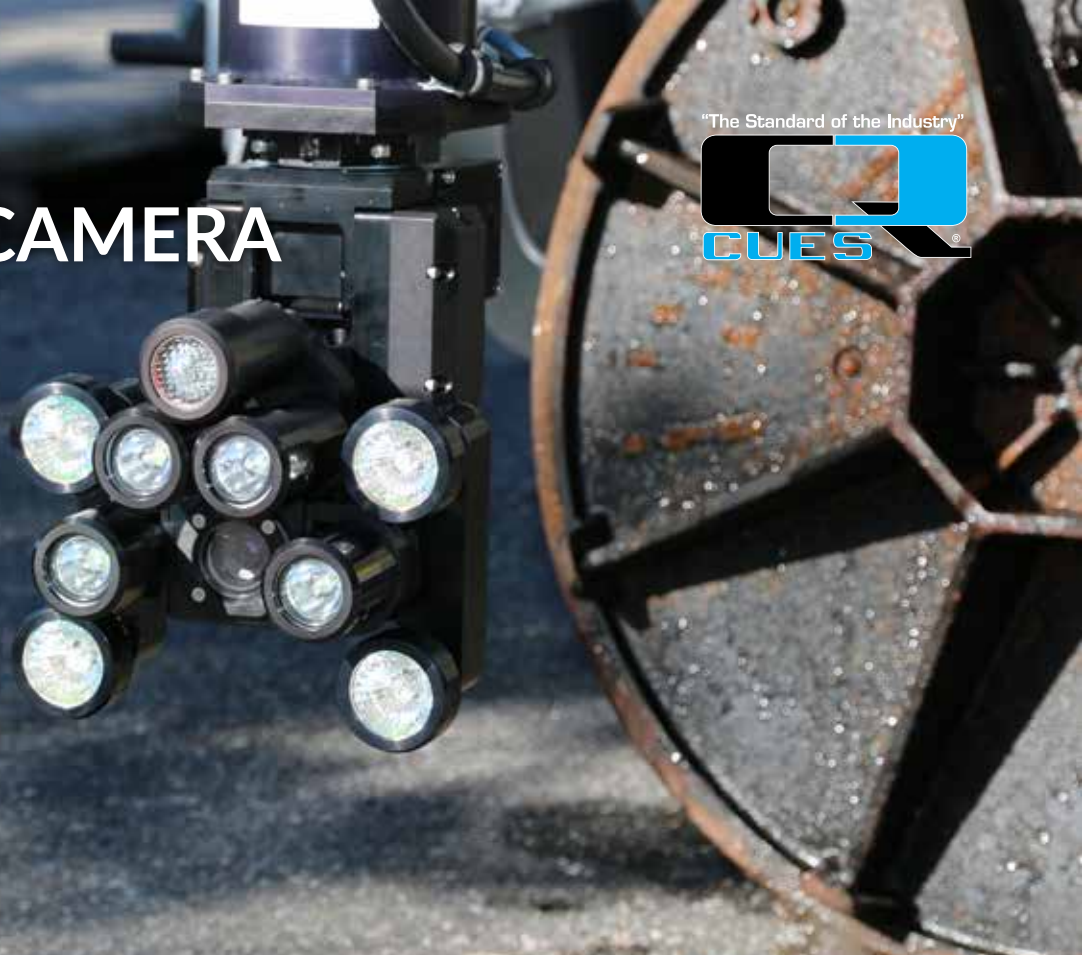


# CUES-IMX MANHOLE CAMERA

"The Standard of the Industry"

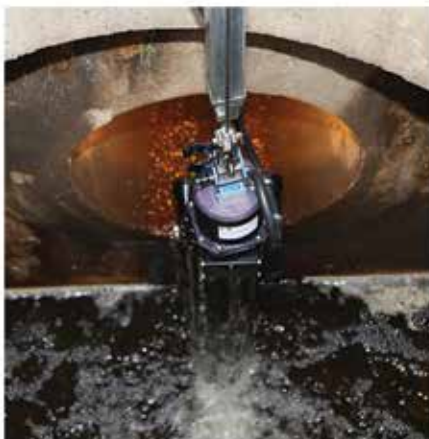


*PRECISE manhole inspection to help prioritize and identify sewer issues!*



WITH THE CUES-IMX MANHOLE CAMERA, COLLECTION SYSTEM OWNERS AND OPERATORS CAN NOW REDUCE SYSTEM OPERATION / MANAGEMENT COSTS AND QUICKLY IDENTIFY HIGH-RISK AREAS OF THE WASTEWATER / STORMWATER SYSTEM.

Make the best use of your time and money by using the CUES-IMX Manhole Camera to inspect your manholes and mainline pipes. The camera offers unparalleled imaging technology with a 25:1 optical zoom that is stabilized and remotely controlled via a telescopic boom to produce picture clarity with enhanced detail up to 300 ft!



# CUES-IMX Manhole Camera

## Features & Benefits

- Manhole inspection with live video to help prioritize and identify sewer issues.
- Swiftly locate problem areas of the pipe.
- Quickly identify maintenance requirements and identify structural defects to prevent sewer overflows.
- Helps you comply with CMOM & GASB34 requirements.
- Designed for use in pipes 6" in diameter and up with the ability to illuminate and inspect manholes and large diameter pipes at distances up to 300'.
- Designed to provide close-up views of manholes and pipes.
- Base unit consists of the following: boom, mast, controller, camera, and integral/external lighting.
- Designed to gage the manhole depth.
- Mast is designed to position the camera 50ft below the surface of the road.
- Optional compass is available to support GIS systems.

Medium External Lighthouse



Large External Lighthouse



## System Equipment:

### CAMERA

- Optical Zoom Range: 25x; Digital Zoom Range: 1x through 12x
- Total effective zoom ratio: 300x
- Remotely controlled from the control console.
- The mounting fork is designed to pan the camera head 360 degrees continuously, tilt mechanically 35 degrees up, 90 degrees down, and tilt optically 166 degrees; camera forks are rounded or chamfered and do not exceed 5 inches in diameter.
- The camera imager, optics, mechanics, and electronics are housed in a damage resistant, waterproof, rugged enclosure.

### LIGHTING

- Camera Integral HID Lighting - The camera includes (4) HID spot lights and one (1) flood light centered above the lens:
  - Each of the five (5) lights are individually sealed to prevent water entry.
  - Four (4) HID spot lights have a total light output equivalent to 200 watts of halogen light.
  - One (1) HID flood light has a total light output equivalent to 50 watts of halogen light.
- Medium External Lighthouses - The camera includes two (2) quick disconnect external lighthouse assemblies, each lighthouse assembly consisting of two lighthouses on each side of the camera.
  - > The high performance lighthouses provide a total of 340 watts of light, 170 watts per lighthouse assembly.
  - > External lighting is designed to move relative to the camera lens to provide directional illumination.
- Large External Lighthouses - Two quick disconnect large external lighthouse assemblies for inspection of pipelines 18" diameter to 84".

### MAST SYSTEM

- The truck-mounted mast can position the camera 50ft below the surface of the road and is designed to achieve optimum picture stability throughout the optical zoom range of the camera.
- The camera unit can be electronically raised and lowered.
- Prevents the need for an operator to enter the manhole to position and/or reposition the camera height.
- Perform manhole & mainline inspections and gauge the manhole depth without the need for a camera transporter!
- Can be installed on existing TV inspection systems without the need for modifications to other existing equipment already installed on the unit.

"The Standard of the Industry"

