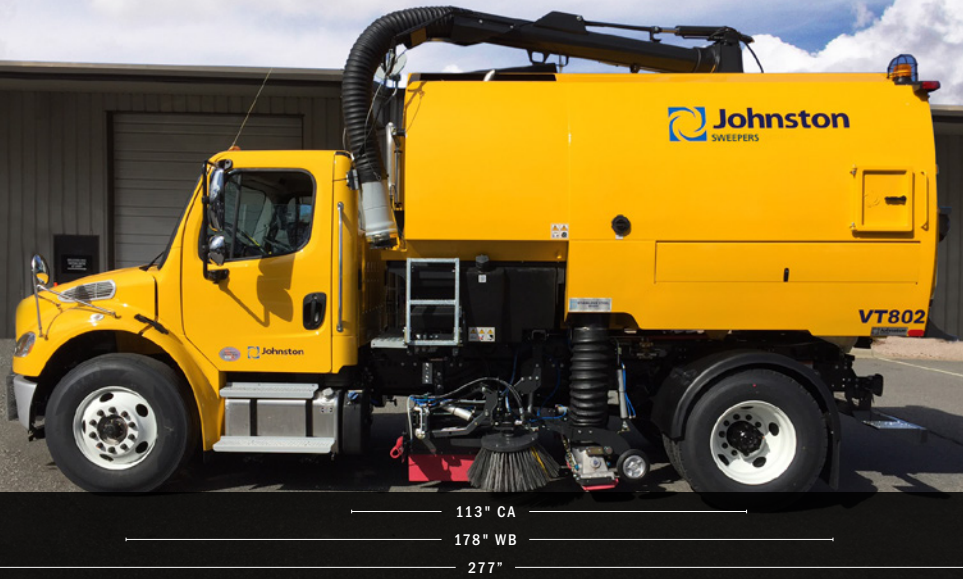


VT802 Sweeper

SERIES VT802
ISSUE NUMBER 01-19
REFERENCE JS 0119



144" w/boom
130"



FRONT MOUNTED STORAGE BOX ADDS 16"

Data & Performance

Sweeping Equipment

Gutter broom (GB)	28"
Wide sweep brush (WSB)	16x50"
GB life expectancy	80 accumulated working hours
WSB life expectancy	150 accumulated working hours
Nozzle trunking diameter	10" I.D.
Nozzle width	30"

Engine Data

Model	John Deere 4045 HF285
Cubic capacity	275 ⁱⁿ³ (4.5 litres)
No. of cylinders	4
Gross rated power	115 HP
Maximum torque	406 LB/FT @ 1500 RPM
Legislation compliance	Tier 3b Flex US EPA
Operational RPM	Variable between 1200-5000 RPM AND 1500-2000 RPM
Sump capacity	3 gallons
Ambient temperature	120°F
Cold start capability	-4°

Capacities

Hopper usable volume	10.5 yd ³
Fuel tank	50 gallons
Water tank	534 gallons
Hydraulic system	20 gallons
Hopper construction	9 gauge stainless steel LIFETIME WARRANTY NO PRORATION

General Data

Chassis requirement	33,000-35,000 LB
Wheelbase	164" - 182" (chassis dependent)
Dump height	37.5" nominal (chassis dependent)
Dump angle	56° nominal
Door opening angle	125° nominal
Hopper screen area	2,800"²
Water pump output	Up to 9.2 GPM
Water pump pressure	50.75 PSI
Hydraulic suction filtration	125 micron
Hydraulic return filtration	20 micron
Hydraulic pump displacement	Max output 7 GPM
Sweeping speeds	2-10 MPH (chassis dependent)

We are **THE ONLY** sweeper manufacturer to offer an all-inclusive warranty (2 years/2,000 hours) and an "entire debris hopper" constructed of stainless steel as a standard with a **LIFETIME WARRANTY**.



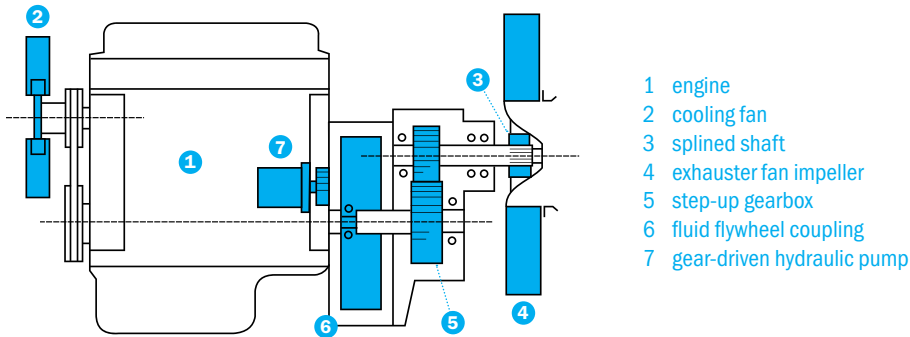
Endless Sweeping Solutions™

105 Motorsports Road, Mooresville, NC 28115
T 704.658.1333 F 704.658.1377

Due to continuous product development Johnston Sweepers reserves the right to alter specifications without prior notice. Copyright © 2019 Johnston Sweepers VT802SPEC.0119

Technical Specifications

AUX ENGINE STEP-UP GEAR BOX SYSTEM



Fan Drive System

Operational speed variable between 2400 RPM - 3500 RPM to suit operation. Driven from the auxiliary engine via step-up gearbox and fluid flywheel coupling.

Step-up gearbox ratio: 1.79:1

Gutter Broom

In-cab down pressure and variable speed controls (0-200 MPH) - unhandled design.

Nozzle

H.D. alloy constructed rubber lined cast aluminium nozzle with 10 in I.D. inlet and tool-free adjustment unhandled design.

Wide Sweep Broom

Quick release brush system with a nominal 160 RPM rotation speed.

Dust suppression system

Dust suppression spray nozzles located at suction nozzle (4), gutter brooms (8) and (4) front spray bar.

Cab-controlled water purging system.

Controls

Center cab mounted master control panel with Johnston Video Monitor (JVM) providing information on a wide range of sweeper functions plus data capture download. Up to four optional cameras can also be viewed on the JVM screen. Separate palm rest controller for the main sweeping functions is mounted on the door side.

Electrical system

12 Volt.

All external loom connections are certified IP67 and IP65 rated. Dust proof and waterproof.

In cab noise

<68 dB(A) (dependent on chassis).

Exterior noise/ Sound power level

LWA 79 dB(A) for standard power engines measured in accordance with EC directive 2000/14/EC.

Debris Body LIFETIME WARRANTY

Body comprised of hopper & integral water tank. Fabricated from heavy duty 9 gauge stainless steel plate.

Cowling is lined with 1.25" soundproofing material.

Water tank incorporates anti-surge baffles and filled via a type 'A' water hydrant fill. An H.D. twin diaphragm pump is able to run dry. Water tight twin lock rear door latching system with de-watering function. Two heavy duty body side access doors.

Hydrant wrench and fill hose.

Plug-in hopper floor as transfer port for use as street flusher.

11" rear discharge chute, twin rear LED beacons with guards, automatic deploying multi-position body propping mechanism and side storage lockers are standard features.

Service ladder with cat walk.

Stainless steel in my body

Complete hopper constructed of stainless steel

Better corrosion resistance than mild steel

Abrasion resistance better than mild steel

Abrasion resistance better than 304 stainless steel

Complete stainless steel water tank

Superior corrosion and abrasion resistance

Lowest ownership costs and best warranties

Only "Lifetime Warranty" in the industry

Options

- JCB Ecomax 444 NRMM Tier 4 125 HP @ 2200 RPM
max torque 324.5 FT/LB @ 1300 RPM
- Camera monitoring system
- In-Cab Gutter Broom Lateral Control
- PM10 dust suppression system
- In-Cab Gutter Broom Tilt Control
- Pneumatic vibrating hopper screens
- Powascrub - In-Cab wide broom down
pressure control
- Supawash - high pressure washing system
8.5 GPM @ 1500 PSI. Handlance, hoses, front and
nozzle spraybars
- 8" boom mounted Wanderhose with hydraulic power
assist and 270° operation

A comprehensive range of additional options are available. Please ask for details.