

DURAMAG®

ALUMINUM SERVICE BODIES FOR ALL APPLICATIONS. MADE IN THE USA.

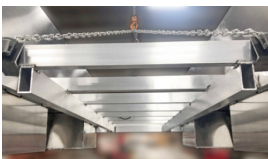


S-SERIES: TRADITIONAL SWING DOORS

DISTRIBUTED BY:

STANDARD FEATURES

- All Aluminum (6000 Series) Understructure with Extruded Box Tube Construction
- Heavy Slam Latch Tailgate with Stainless Steel Lock Rods
- Swing Doors with Nitrogen Props on Vertical Compartments
- Extreme Duty (6000 Series) .625 Interlocking Extruded Aluminum Floor
- Fully Welded Construction—No Rivets, Screws, or Bolts to Come Loose
- Welded Fender Flares for Superior Strength and Rigidity
- Black Polymer Rivetless Door Handles
- Sandblasted Metal Preparation (not inferior wash/zinc phosphate)
- Powder Coated—Standard: White
Optional colors available:
 - Black
 - Red: GM/Dodge Red & Ford Red
- LED Marker Lights (where required)
- LED Penny Light in Each Compartment
- LED Ultra-thin 6" Round Stop/Turn/Tail/Backup Body Lights
- 3/16" smooth cargo walls & compartment tops
- Continuous Aluminum Piano Door Hinge
- Rear Compartments Reinforced for Liftgate Applications
- Pickup Service Bodies Compatible with Factory Hitches
- Adjustable Shelving in Front, Middle, and Rear Compartments (one shelf with dividers in each compartment)
- Pass through Panel between Front & Center Compartments
- Tread Plate Rock Guards on Front Wall—ALL Models
- Strongest Built Aluminum Service Body in the Industry



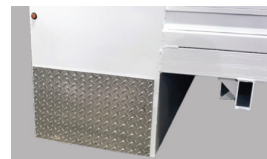
Strongest Understructure in the Industry



Center Compartment with Dropdown Door (showing Double Walled Doors)



Pass Thru Compartment Shown Between Front and Middle Boxes



Tread Plate Rock Guards on Front Walls



LED Ultra-thin 6" Round Stop/Tail/Turn/Backup Body Lights

OPTIONS

Cast Aluminum Fuel Filler

Magnum Rack

Canopy

Master Lock System

Flip Top Compartments

Roll-up Tonneau Covers

Bumpers—Lighted and non-lighted

E-Track

7' SERVICE BODIES

Model	DuraMag Aluminum Weight (lbs)	Typical Steel Weight (lbs)	% Lighter Than Steel	Cab to Axle	Compartment Door Openings		
					Front	Middle	Rear
SB-S-36D-STD-SRW	582	874	33%	36"	10-5/16" x 12-5/16"	56-3/16" x 15-5/16"	20-5/16" x 33-3/16"
SB-S-40F-STD-SRW	665	964	31%	40"	10-5/16" x 12-5/16"	56-3/16" x 15-5/16"	20-5/16" x 33-3/16"
SB-S-42G-STD-SRW	670	1,009	34%	42"	10-5/16" x 12-5/16"	56-3/16" x 15-5/16"	20-5/16" x 33-3/16"
SB-S-31FR19-STD-SRW RANGER	582	874	33%	31"	-	44-5/16" X 14-1/4"	19-3/16" X 32-1/4"

8.5' SERVICE BODIES

Model	DuraMag Aluminum Weight (lbs)	Typical Steel Weight (lbs)	% Lighter Than Steel	Cab to Axle	Compartment Door Frame Opening Clearance		
					Front	Middle	Rear
SB-S-56-STD-SRW	811	1,111	37%	56"	22-3/16" x 33-3/16"	42-5/16" x 15-5/16"	20-5/16" x 33-3/16"
SB-S-56-STD-DRW	895	1,288	43%	56"	22-3/16" x 33-3/16"	42-5/16" x 15-5/16"	20-5/16" x 33-3/16"

9' SERVICE BODIES

Model	DuraMag Aluminum Weight (lbs)	Typical Steel Weight (lbs)	% Lighter Than Steel	Cab to Axle	Compartment Door Frame Opening Clearance		
					Front	Middle	Rear
SB-S-60-STD-SRW	820	1,238	51%	60"	26-7/8" x 33-3/16"	42-5/16" x 15-5/16"	24-7/8" x 33-3/16"
SB-S-60-STD-DRW	912	1,399	53%	60"	26-7/8" x 33-3/16"	42-5/16" x 15-5/16"	24-7/8" x 33-3/16"

11' SERVICE BODIES

Model	DuraMag Aluminum Weight (lbs)	Typical Steel Weight (lbs)	% Lighter Than Steel	Cab to Axle	Compartment Door Frame Opening Clearance			
					Front (Cab Side)	Front (Rear Side)	Middle	Rear
SB-S-84-STD-DRW	1,124	1,704	52%	84"	26-7/8" x 33-3/16"	18-5/16" x 33-3/16"	42-5/16" x 15-5/16"	24-7/8" x 33-3/16"

DURAMAG®

ALUMINUM BODIES FOR ALL APPLICATIONS. MADE IN THE USA.



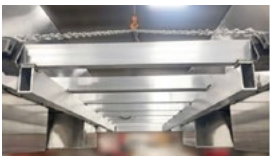
Shown with optional fuel filler installed, lighted bumper and cantilever rack

R-SERIES: PREMIUM ROLL-UP DOORS

DISTRIBUTED BY:

STANDARD FEATURES

- All Aluminum (6000 Series) Understructure with Extruded Box Tube Construction
- Heavy Slam Latch Tailgate with Stainless Steel Lock Rods
- Premium Roll-Up Safety Designed Doors
- Extreme Duty (6000 Series). 625 Interlocking Extruded Aluminum Floor
- Fully Welded Construction—No Rivets, Screws, Bolts to Come Loose
- Welded Fender Flares for Superior Strength and Rigidity
- Sandblasted Metal Preparation (not inferior wash/zinc phosphate)
- Powder Coated—Standard: White
Optional colors available:
 - Black
 - Red: GM/Dodge Red & Ford Red
- LED Marker Lights (where required)
- LED Penny Light in Each Compartment
- LED Ultra-thin 6" Round Stop/Turn/Tail/Backup Body Lights
- Inner Bed Walls and Exterior Top of Compartments—1/8" Diamond Plate
- Adjustable Shelving in Front, Middle, and Rear Compartments (one shelf with dividers in each compartment)
- Pass through Panel between Front & Center Compartments
- Tread Plate Splash Guards on Front Wall—ALL Models
- Strongest Built Aluminum Service Body in the Industry
- BEST 10 YEAR WARRANTY in the Industry



Strongest Understructure in the Industry



Center Compartment with Dropdown Door (showing Double Walled Doors)



Pass Thru Compartment Shown Between Front and Middle Boxes

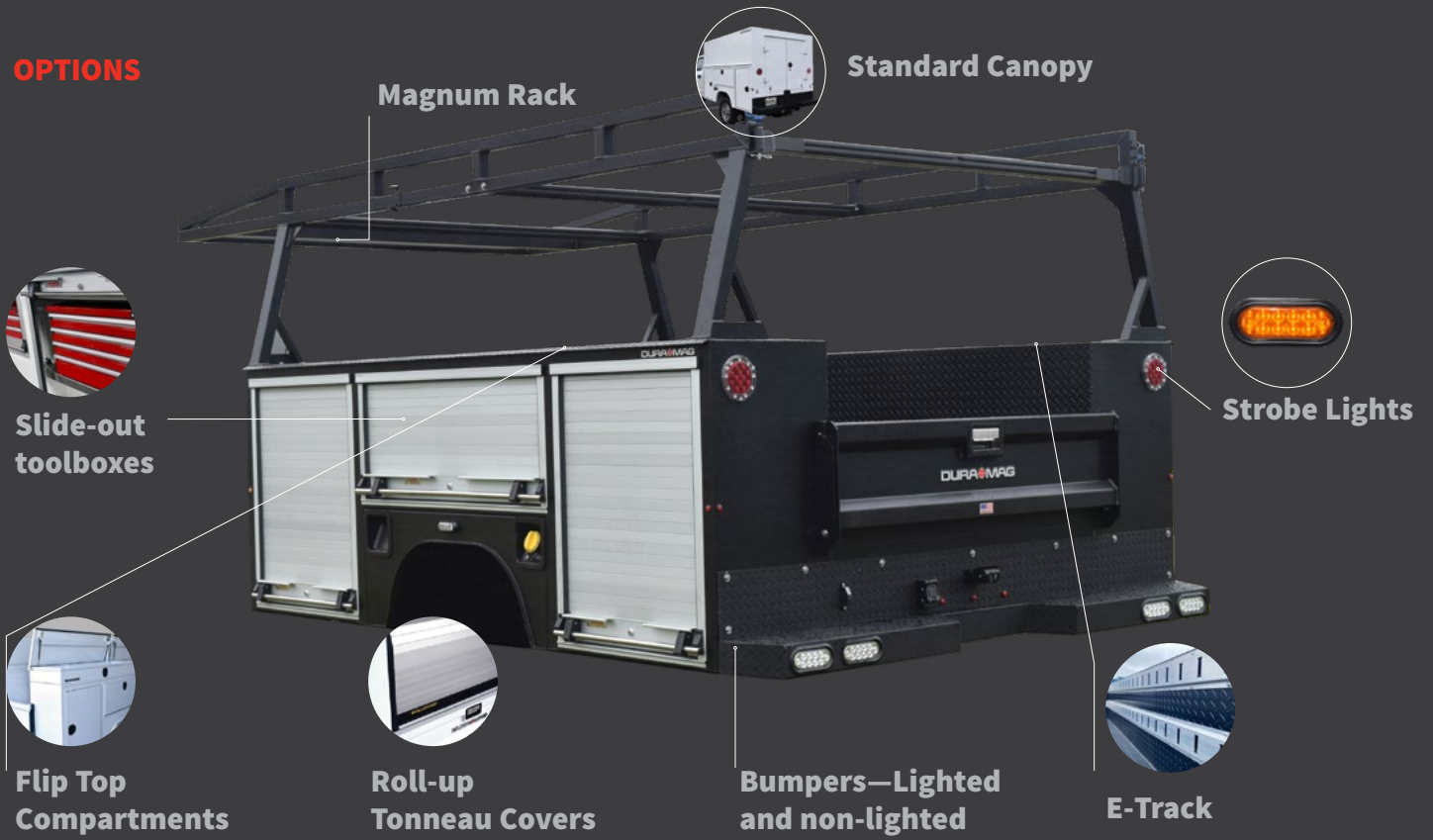


Tread Plate Rock Guards on Front Wall



LED Ultra-thin 6" Round Stop/Tail/Turn/Backup Body Lights

OPTIONS



7' SERVICE BODIES

Model	DuraMag Aluminum Weight (lbs)	Typical Steel Weight (lbs)	% Lighter Than Steel	Cab to Axle	Compartment Door Openings		
					Front	Middle	Rear
SB-R-36D-STD-SRW	582	874	33%	36"	49-1/16" x 15"	21-3/16" x 32-3/4"	20-5/16" x 33-3/16"
SB-R-40F-STD-SRW	665	964	31%	40"	57-11/16" x 15"	21-3/16" x 32-3/4"	20-5/16" x 33-3/16"
SB-R-42G-STD-SRW	670	1,009	34%	42"	57-11/16" x 15"	21-3/16" x 32-3/4"	20-5/16" x 33-3/16"

8.5' SERVICE BODIES

Model	DuraMag Aluminum Weight (lbs)	Typical Steel Weight (lbs)	% Lighter Than Steel	Cab to Axle	Compartment Door Frame Opening Clearance		
					Front	Middle	Rear
SB-R-56-STD-SRW	811	1,111	37%	56"	23-15/16" x 32-3/4"	43-3/16" x 15"	21-3/16" x 32-3/4"
SB-R-56-STD-DRW	895	1,288	43%	56"	23-15/16" x 32-3/4"	43-3/16" x 15"	21-3/16" x 32-3/4"

9' SERVICE BODIES

Model	DuraMag Aluminum Weight (lbs)	Typical Steel Weight (lbs)	% Lighter Than Steel	Cab to Axle	Compartment Door Frame Opening Clearance		
					Front	Middle	Rear
SB-R-60-STD-SRW	820	1,238	51%	60"	28-3/16" x 32-3/4"	43-3/16" x 15"	26-3/16" x 32-3/4"
SB-R-60-STD-DRW	912	1,399	53%	60"	28-3/16" x 32-3/4"	43-3/16" x 15"	26-3/16" x 32-3/4"

11' SERVICE BODIES

Model	DuraMag Aluminum Weight (lbs)	Typical Steel Weight (lbs)	% Lighter Than Steel	Cab to Axle	Front	Middle	Rear
					SB-R-84-STD-DRW	1,124	1,704

DURAMAG®

ALUMINUM BODIES FOR ALL APPLICATIONS. MADE IN THE USA



DURAMAG® CANOPY

DISTRIBUTED BY:

The DuraMag® Canopy is an option that's added to the base service body during production. The Canopy Body creates the ultimate enclosed mobile workstation. Securely transport your tools from job to job. Bad weather? Work inside!

STANDARD FEATURES

- Enclosed Service Body that is Full Width
- Single Shelf per Side (located 19" from compartment tops)
- Rear Barn Doors (includes Barn Door Tie Backs)
- LED Dome Light with Switch
- Standard Heights include:
 - 53" (51" Interior Clearance)
 - 63" (61" Interior Clearance)
 - 74" (72" Interior Clearance)



53" Canopy

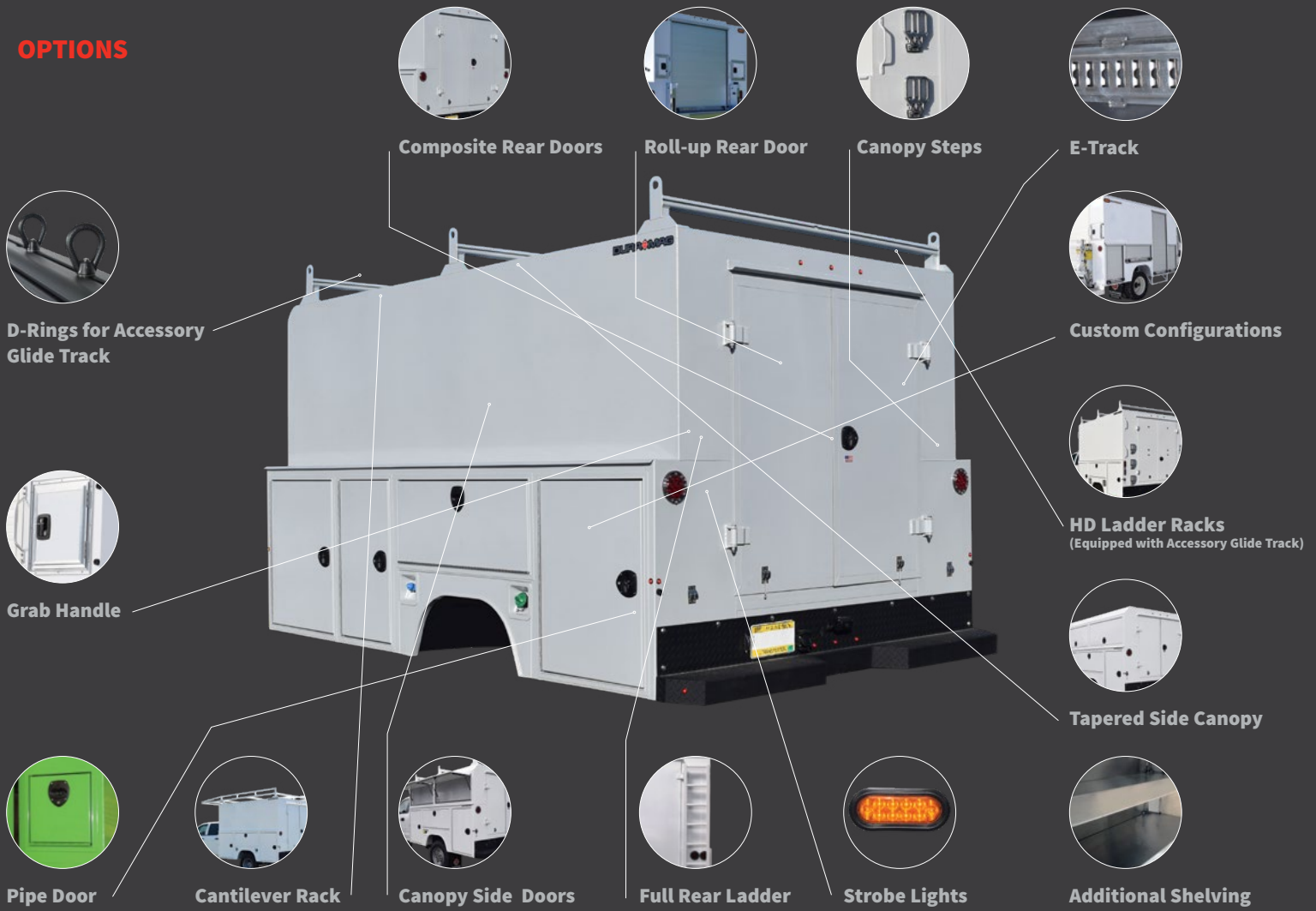


63" Canopy



74" Canopy

OPTIONS



CANOPY DIMENSIONS

Model*	Canopy Height	Interior Clearance	Competition Steel Weight (lbs)				
			56 CA		60 CA		84 CA
53CANOPY	53"	51"	429	484	464	518	615
63CANOPY	63"	61"	526	581	527	586	685
74CANOPY	74"	72"	619	678	600	662	772

* Canopy Height is measured from floor of service body bed to the top of the canopy roof

NOTE: All weights calculated with canopy standard features include rear barn door and standard interior shelving (one shelf per side)
All specifications subject to change without notice