



**Global Environmental Products Inc.** offers equipment with uncompromising performance, consistent quality, durability and reliability. Our comprehensive range of machines provide the right cleaning equipment for your application. Please contact us for a demonstration at (909) 713-1600.

- ▶ Reliable / Durable Equipment
- ▶ Innovative Engineering / Design
- ▶ Industry Leading Reputation
- ▶ Dedicated Customer Service
- ▶ Outstanding Sales Professionals
- ▶ Fast Parts and Service
- ▶ National Dealer Network

[www.GlobalSweeper.com](http://www.GlobalSweeper.com)

MADE IN THE USA

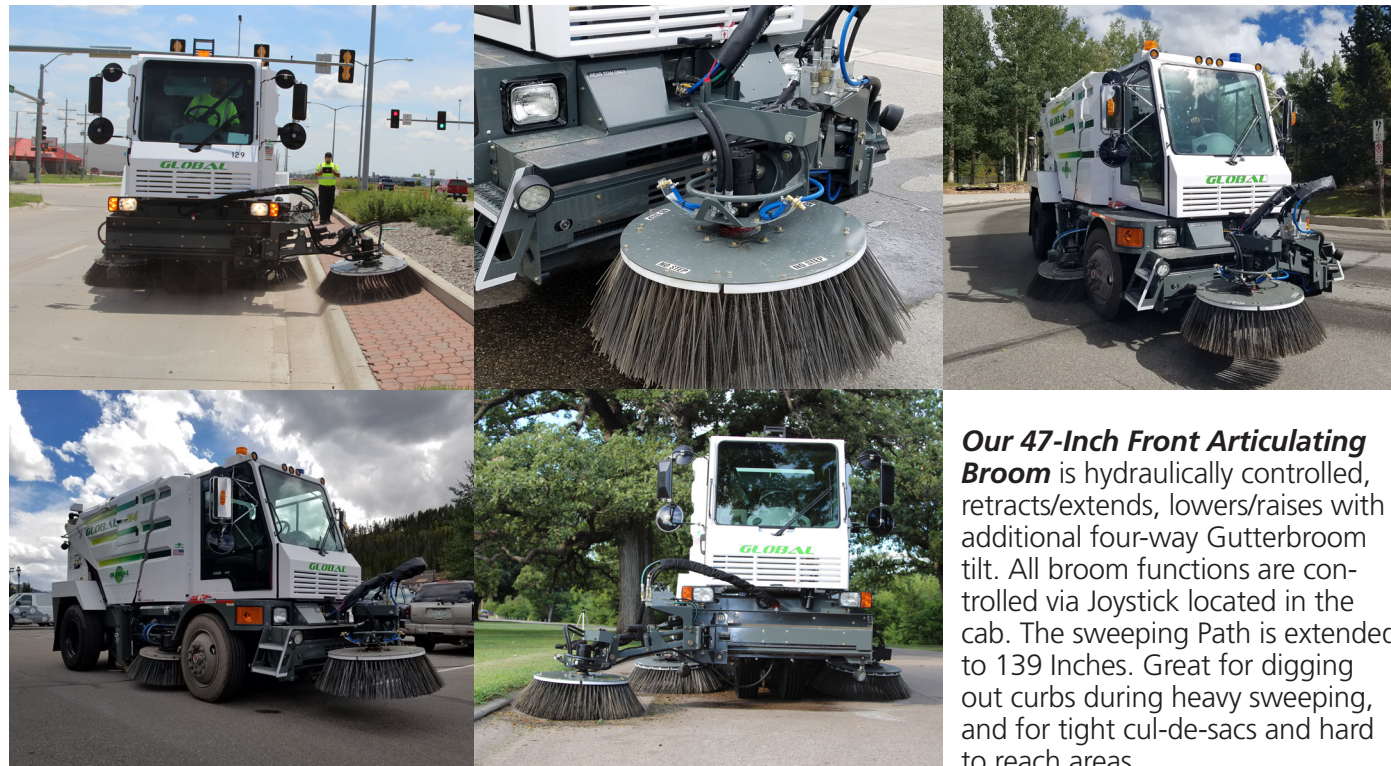
Sold and Serviced by:



**ISO**  
9001:2015  
CERTIFIED

**Global Environmental Products**  
5405 Industrial Parkway  
San Bernardino, CA 92407 USA  
909-713-1600  
[info@globalsweeper.com](mailto:info@globalsweeper.com)

**Please contact us about Additional Options  
Front Articulating Broom:**



**Our 47-Inch Front Articulating Broom** is hydraulically controlled, retracts/extends, lowers/raises with additional four-way Gutterbroom tilt. All broom functions are controlled via Joystick located in the cab. The sweeping Path is extended to 139 Inches. Great for digging out curbs during heavy sweeping, and for tight cul-de-sacs and hard to reach areas.

© Copyright 2022, Global Environmental Products, Inc. • Specifications may change without notice. • V-031622



**AIR**  
GLOBAL

**GLOBAL R4 AIR**®  
Regenerative Air Sweeper

**Purpose-Built • Powerful • Maneuverable • HIGH-DUMP**

- ▶ 18.5' Turning Radius
- ▶ Cab-Over Design with Unmatched Visibility
- ▶ Large 47" Gutterbrooms Designed to Clean the Curb
- ▶ Large 32" Diameter Impeller
- ▶ Unmatched Access to Engine and Sweeping Components
- ▶ Large 5.8 Cubic Yard Hopper with Access Door
- ▶ 100% Stainless Steel Hopper Construction
- ▶ Lots of Power with Excellent Fuel Efficiency

## PURPOSE-BUILT • POWERFUL • MANEUVERABLE • HIGH-DUMP

### THE ULTIMATE PERFORMANCE AND AGILITY

From the modern, comfortable and well appointed operator's cab, to the toughest and most rugged Regenerative-Air Type sweeping system ever built, the **Global R4AIR** is designed to take on the worst of the worst sweeping conditions.

**The performance matched 32" Suction Fan and 72" Wide Pick-Up Head** provide superior sweeping of all heavy debris quickly and efficiently. The purpose-built chassis is based on four decades of experience designing the most effective, and safe, street sweepers in the industry

The 130-inch wheelbase allows for the sweeper to reach a **turning radius of 18 1/2', wall-to-wall**. With the pickup Head in the center you don't have to worry about what is happening behind you. **Global R4AIR is the only 4-Wheel Air Type Street Sweeper in the market that can be utilized virtually anywhere with the ability to HIGH-DUMP into a dump truck.**

#### Global R4AIR Standard Equipment

- Air Conditioned and Pressurized Cab
- In-Cab Gutterbroom Pressure Adjustment
- Front and Rear Chalmers Suspension
- Rear View Camera and LCD Monitor
- 72" Wide Pick-Up Hood, 32" Impeller
- 280 HP 6.7 Liter ISB Cummins Engine Tier 4 Final
- Hopper Access Door
- 100% Stainless Steel Hopper Construction

#### Global R4AIR Options

- In-Cab Gutterbroom Tilt
- In Cab Gutterbroom Speed Control
- AM/FM/CD Stereo with AUX/USB Port and BlueTooth
- Air-Ride Seat
- Hopper Wash Out System
- Suction Hood Wash Out System
- Curtain Lift Arm Leaf
- Automatic Greasing System



**THE BEST TURNING RADIUS & EXCEPTIONAL VISIBILITY** With the center mounted cab/forward layout the operator has unsurpassed visibility of the road surface as well as pedestrians and surrounding traffic. The 130-inch wheelbase allows for the sweeper to reach a **turning radius of 18 1/2', wall-to-wall**. With the pickup Head in the center you don't have to worry about what is happening behind you. The **Global R4AIR's** exceptional visibility increases operator and pedestrian safety.

#### THE ULTIMATE SWEEPING SYSTEM

The Sweeping system consists of **72" Wide Pick-Up Hood with Carbide Dirt Shoes**, combining both with a **Large 32" Suction fan** equals to one of the most powerful AIR Street Sweepers available today.



#### POWERFUL GUTTERBROOMS

**Large 47" Digger-Type Gutterbrooms** allow for superb cleaning of curbs and help guide the debris to the 72" wide Pick Up Hood. Combined with a Large 32" Suction fan equals one of the most powerful AIR Street Sweepers available today.

#### DUST SUPPRESSION SYSTEM

**Global R4AIR** includes **250-Gallon Water Tank Capacity** combined with **Two(2) Diaphragm Water pumps** and **Two(2) Modes (LOW/HIGH)** provide versatility and superb dust control.



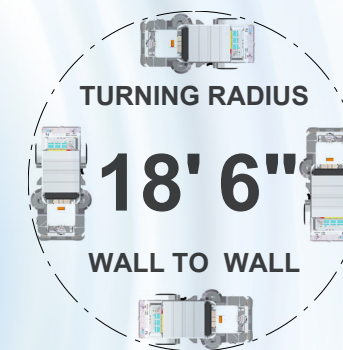
#### LARGEST HOPPER IN IT'S CLASS

**Global R4AIR** includes a **5.8 cu/yard 100% Stainless Steel hopper construction**. **Cyclone Type Dust Separators** and **Swing-Down Hopper Screens** are easy to clean.

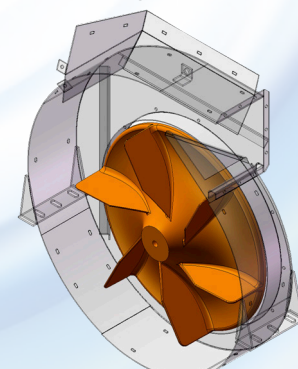


The **Global R4AIR** is designed to make routine maintenance easy, so your sweeper spends more time on the street and less time in the garage. **Two swing-out center body panels** provide unrestricted access to **Fan Housing**, maintenance and daily cleaning. A centralized, weather-proof systems locker fully protects electrical components from the elements while fender located Hydraulic system allows for easy maintenance, accessibility and inspection. Troubleshooting is now a breeze.

The **Global R4AIR** offers the best maneuverability in its class with its tight turning radius that allows the operator to maneuver easily in cul-de-sacs and close quarters.



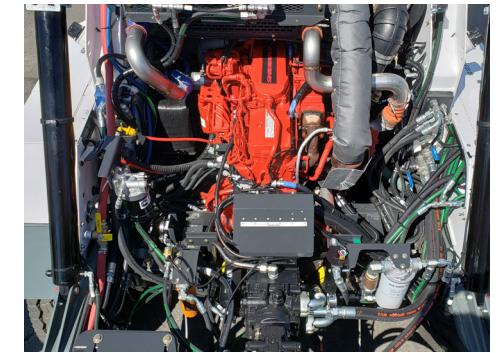
**Designed to Prevent Sand-Blasting** Designed for **Durability, Easy Access, and Long Service Life.**



#### THE ULTIMATE AIR SWEEPING SYSTEM

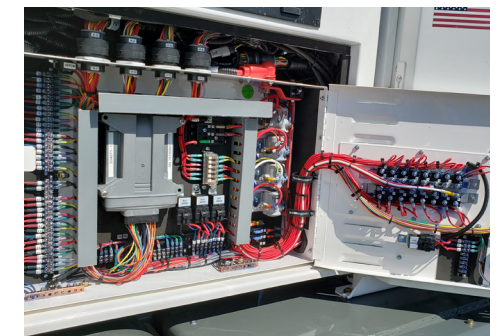
**Large 32" Diameter steel Impeller** includes wear-resistant coating. The **Internal Impeller Housing** components include **Rubber Lining**. Driven **Hydraulically**, Impeller will reach speed of **3,000 RPM** independent of Engine RPM or Sweeping Speed.

**Hydraulically-Driven Fan** sealed loop Air is blasted down a 12" vertical tube (Pressure Side) on the left side of the Pick-Up Hood. Debris and Air then travels to the right and up 12" Hose (vacuum side), Enter Dust Separator, which filters fine particles from Air Stream before it reaches the blower again. Water system keeps the debris from returning to the impeller.



The **Global R4AIR** comes standard with a fuel-efficient Tier 4 Final, 6-cylinder, turbocharged 280-horsepower 6.7-liter Cummins ISB diesel engine, largest in its class, delivering outstanding performance and reliability.

**IT'S ALL IN THE OPEN** Hydraulic Hoses are NOT hidden in the frame of the sweeper, while all Manifolds and Filters are located in a central location.



#### EASY TROUBLESHOOTING

A centralized, weatherproof systems locker fully protects electrical components from the elements while it allows maintenance staff easy accessibility for inspection and troubleshooting.

The **Global R4AIR** features many maintenance-friendly attributes, such as a rear swing-out radiator, easy access front mounted AC condenser, brake and windshield washer fluid reservoirs, and cab fresh air filter.

