

Xtreme VAC

by 



LCB500

- Debris collection box constructed of 12-gauge steel panels with angle frame supports.
- expanded steel top screens for better ventilation
 - heavy-duty hinges with 3/4" pin

The LCB500 is the sturdiest debris collection box on the market. Contact your local Xtreme Vac dealer to order yours today!

*Standard color is white.

*Units may be shown with options.



Sold and Serviced by:



Call: 1-800-362-0240
Email: sales@mtechcompany.com



Scan using your phone's camera



Sourcewell
Formerly NJPA

Awarded Contract

Contract # 041217-ODB



Specifications

Debris Collector Box for Tow-Behind Units

Door

Top hinged door, framed with 4 vert. and 4 horiz. angle frame supports. Panels are 12-gauge steel. The door has a hose support and a flexible rubber gasket with a hole to accommodate the exhaust hose.

Hinges

4 cleave-type hinges which are constructed of 3/8" thick steel with 3/4" thick pins.

Top Screens

The top is two-thirds vented with 1/2" expanded flattened steel. The screen is supported with 3/16" x 1-1/2" angle frames.

Gasket

The 12", 14", or 16" diameter hole is positioned to support the bottom of the exhaust hose 40" from the bottom of the box. Other heights and hole diameters are available as an option. Specify dia. when ordering.

Floor Panel

Box floor is a short floor panel that allows the box to overhang the back of the truck by as much as 12".

Dimensions

Box 72"H x 77"W (min. 81" truck width) available in 12" increments to equal lengths from 8ft. to 16ft.

Lifting Eyes

4 lifting eyes, two on each corner are welded to the top of the box allowing the box to be lifted easily with a crane or hoist.

Handles

Four convenient handles are welded to the long sides of the box, two at 3 feet from the bottom, and two at 6 feet from the bottom.

Latch

Unique easy-open latch eliminates door rod binding. The convenient handle easily locks and unlocks the box door for dumping.

Box Interior

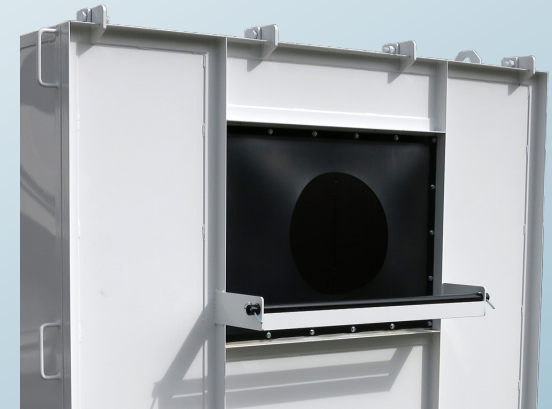
Smooth interior for easy dumping. Equipped with a heavy-duty rubber deflector to stop debris from hitting the front of the box.

Paint

Primed with a rust inhibitor and painted with 2 coats of PPG paint. White is standard, other paint colors available as an option.

Option

Chipper door in lieu of hose gasket.



Easy to open and close latch mechanism makes closing the door simple and virtually effortless.

