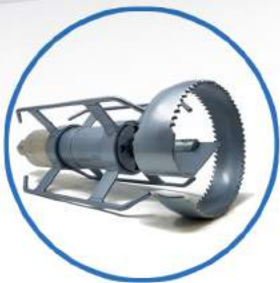


# Advanced **WORKHORSE** TOOLS

**Maximize** ▶▶▶▶▶▶▶▶  
**Your Horsepower**



"Extraordinary tools...  
...at sane prices."

PLEASE SUPPORT YOUR  
LOCAL WORKHORSE DISTRIBUTOR

Advanced Infrastructure Technologies, the Advanced logo, Work Horse Nozzles and Near Diamond Hard are all trademarks of Advanced Infrastructure Technologies. Copyright Advanced Infrastructure technologies, LLC 2014-2018 all rights reserved.

## LOCATING

### Locating

[Spot Magnetic Locator, Maggie Magnetic Locator, Ridgid 512Hz Sonde, Standard Sonde, Super Sonde 33kHz, RD5100S, Aqua M300]

**03**

## MANHOLE TOOLS

### Fiberglass Poles, Tools

[Attachments: Scoops, Spoons, Grabbers, Choppers, Camera & Skid Tools, Bumper Mount Traffic Cone Holder, Debris Grabbers, Handi-Clams]

**04**

### Manhole Rollers, Debris Catchers

[Uppers & Lower Rollers, Tools Harness, Debris & Grit Catchers: Expanded Metal type, Aluminum Perforated Holes Type]

**05**

## JETTING TOOLS

### Tiger Tails, Easement Cart, Leader Hose

[Orange & Black and Yellow & Black]

**06**

### Nozzle Extensions, Proofers

[Flat Wire, Football Wire, Finned Wire, Proofers, Shorty Wire, "Tough Cover" Leader Hose]

**07-08**

### Hydraulic Root Cutter Kit and Accessories

[Skids, Chucks, Root Saws, Spring Blades]

**09**

## RODDING TOOLS

### RQC System

[Rodder Quick Coupling System Diagram, Spring Blades Assembly]

**10**

### Rodding Tools, Chucks, Drive Spuds

**11**

### Root Saw, Augers, Corkscrews, Spring Blades

**12**

### Rod Turning Tools, Assembly Turning Wrench, Push-Pull Tool, Pick Up Tool, Adapter Rods

**13**

### Rod Guide Hose, Continuous Rod Bending Kit, Sectional & Continuous Sewer Rods, Porcupines

**14**



## LID LOCATORS

### Spot Magnetic Locator – Weighs only 2lbs!

Schonstedt builds the best metal detectors available. The SPOT is a sleek, ultralight-weight package with improved ergonomics. 7 year warranty!

If you're looking for High Accuracy at a Lower Cost, put Spot on the trail of your next locate!

- Depth Rating: Up to 15 feet
- Dimensions: 42.3" Overall Length
- Includes soft case

Part No. AW6201



### The Maggie Magnetic Locator – Most versatile, and with a visual display

The MAGGIE combines superior sensitivity and single handed operation, with a visual display.

- Depth Rating: Up to 18 feet
- Includes padded case (34" x 10" x 4")
- 7-year warranty

Part No. AW6202



### Ridgid 512Hz Sonde



Super small size makes this a plumber's favorite: Dims: 1" diameter x 3" long. Red LED indicates sonde is transmitting.  
**Rated Depth: 12'**  
**Practical Depth 8"**

Part No. AW6001

### Standard Sonde

512Hz or 33Khz



When you need a little more depth, comes with a threaded cap to attach to a pushrod. Dims: 1.53" diameter x 4.2" long.  
**Rated Depth: 16'**  
**Practical Depth 12"**

Part No.	Khz
AW6102	512khz
AW6103	33khz

### Super Sonde 33kHz



This massive sonde emits a powerful signal. This is the deepest working sonde we know of. Dims: 2.5"Dia. x 12.5"L  
**Rated Depth: 49'**  
**Practical Depth 30"**

Part No. AW6104

## SONDE LOCATOR

### RD5100S Great Price!

Brought to you by the leading locator company in the world, a precision sonde locator with all 3 of the industry standard sonde frequencies, including; 512Hz, 8kHz, and 33kHz. This model is upgradable to add line locating capabilities as your needs develop.



Item	Part No.
RD5100S Locator Receiver	AW6122
Soft Carry Bag (optional)	AW6113

## NON METALLIC WATER PIPE LOCATOR

- The best non-metallic water pipe locator available.
- The best leak detector we have found.
- A digital readout greatly assists in pinpointing location.
- Smart modes help zero in on the leak noise.
- Touch screen.

Part No. AW6700



- The PWG is attached to a hydrant or to a in-house installation
- An acoustic pulse travels along the pipe
- The pulse is detected with listening devices of the AW6700 series and with the ground microphone



## Fiberglass Pole

Our heavy duty foam core, fiberglass poles are a lot more rigid than flimsier versions, giving operators more power and confidence as they work. Base poles have a rubber grommet on the end.



Pole Length	Base Pole Part No.	Extension Pole Part No.
4'	AW3020-4B	AW3020-4E
6'	AW3020-6B	AW3020-6E
8'	AW3020-8B	AW3020-8E

## Scoop

Adapted for our fiberglass pole system, this easy to deploy scoop is very easy to use.



Pipe Size	Part No.
6"	AW3174-6
8"	AW3174-8
10"	AW3174-10
12"	AW3174-12

## Chopper

Used to chop up blocks of grease that float back while jetting. Can also be used for scraping walls in pump and lift stations.

Part No. AW3002



## Catch Basin Spoon

Used to scoop debris from manholes and catch basins

Part No. AW3003



## Handi-Clams

Used to clean manholes and catch basins from the surface level. Shovel end of clam is opened and closed from the top side with spring loaded handle. Designed for removing sand, gravel and miscellaneous sewer debris.

Handle Length	6'	8'	10'	12'	14'	16'	18'
Part No.	AW3030-6	AW3030-8	AW3030-10	AW3030-12	AW3030-14	AW3030-16	AW3030-18
Wide Bucket	AW3031-6	AW3031-8	AW3031-10	AW3031-12	AW3031-14	AW3031-16	AW3031-18

## Debris Grabber

Our debris grabber includes a telescoping pole with a double twist lock and line lock to hold debris securely in the serrated jaws.



Length	Part No.
8-16	AW3060
8-24	AW3061



Demo on  
YouTube

## Hose Grabber

Set the slot over the hose and twist 90° to securely grab the hose at the bottom of the manhole. You will be glad you have this tool on your rig - it comes in handy!

Part No. AW3001



## Camera & Skid Tool

A great option for grabbing the bridle on the camera and pulling it back into the bottom of the manhole. It is also commonly used to retrieve sewer hoses, hook nozzles, extensions and proofers.

Part No. AW3004



## Bumper Mount Traffic Cone Holder

For Use With: Standard Traffic Cones

Weight 8.41 lb.  
Inside Dia.: 11"  
Height 11"



Part No. AW3015





## Lower Manhole Roller

Our heavy duty LMR provides extra protection and lower friction versus conventional tiger tails. Your expensive hoses will last longer and your nozzles will travel further and faster! Use the two parts; the "top mount" and the "lower guide roller assembly" with commercially available 1" galvanized steel pipe.

Part No. AW3007



## Tools Harness

For Tiger Tails + Debris Baskets

Operators love our new tools harness.

Constructed of extra heavy duty synthetic rope which has a "heftier feel" to relieve strain from gripping wimpy and slippery plastic ropes.

Includes a 2' length of zinc plated chain and a threaded locking quick link for secure fastening to your tools.



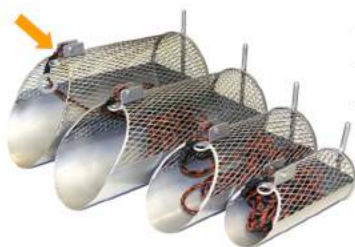
Length	26'	38"
Part No.	AW3025-26	AW3025-38

Your operators will love the feel. Seriously...

## Debris Basket: Expanded Metal Type

The fully closed bottom half captures grit and debris of all kinds, while the free flowing expanded metal on the upper half allows flow to pass by easily. Available with a 25' poly rope or with a quick coupling which fits industry standard pole systems. See our poles, page 3.

Poly Rope Shown



Part Size	6"	8"	10"	12"
w/ Poly Rope	AW3028-6	AW3028-8	AW3028-10	AW3028-12
w/ Quick Coupling	AW3028-6Q	AW3028-8Q	AW3028-10Q	AW3028-12Q
Dimensions	5 1/2"D* x 14" L	7-1/2"D* x 18" L	9-1/2"D* x 24" L	11-1/2"D* x 24" L

Quick Coupling Shown



## Debris Basket: Aluminum Perforated Holes Type

This lightweight type has round holes, which operators report passes TP and sticky debris easier than the X-metal type above, allowing for easier cleaning of the tool, for less messy storage on your vehicles.

Part Size	6"	8"	10"	12"
w/ Poly Rope	AW3018-6	AW3018-8	AW3018-10	AW3018-12
w/ Quick Coupling	AW3018-6Q	AW3018-8Q	AW3018-10Q	AW3018-12Q
Dimensions	5 1/2"D* x 8" L	7-1/2"D* x 8" L	9-1/2"D* x 10" L	11-1/2"D* x 12" L

\*D=Diameter New design now includes a shovel front.

## Upper Manhole Roller (Aluminum Construction)

Our heavy duty LMR provides extra protection and lower friction versus conventional tiger tails. Your expensive hoses will last longer and your nozzles will travel further and faster! Use the two parts; the "top mount" and the "lower guide roller assembly" with commercially available 1" galvanized steel pipe.

Part No. AW3005

Super Light-weight! Operators' Favorite!



If you don't see it, please ask us!

Send your suggestion to:

[Sales@WorkHorseTools.com](mailto:Sales@WorkHorseTools.com)

Suggestions which are accepted into the next catalog will receive one free tool!



### TOP SELLER EC1 Easement Cart

This easement machine is the real deal! Finally, an easy to maneuver, super performing and easy to use easement machine. For about the cost of the trailer for all the others, this easement machine will get you to all those tough places, making cleaning in hard to access easements a walk in the park!

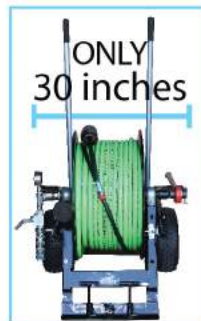
Municipalities and contractors own this very simple and handy tool, to clean mainlines and easements in "hard to get to" jobs "Like a walk in the park!"

Part Number	Weight (lbs)	Dimensions (1" x H" x W")
AW3200	175*	29 x 31 x 30**

\* without water in hose reel  
\*\* with pole in storage position



- Ball shutoff valve
- Pressure gauge
- Resettable footage counter
- 1" or 3/4" swivel connect to your jetter



At just 30" wide, the EC1 is easily the most navigable easement machine available!



Transportable in wheelbarrow mode or hand truck mode.

Well thought out design features include:

- Ball valve shut off
- Pressure gauge
- Reset table footage counter
- 300' of 1/2" hose
- Ratchet rewind handle
- Ground positioning stakes
- Leader Hose and Tiger Tail



### Tiger Tails

Our heavy duty "Tuff Tail" is made from a superior construction orange and black rubber hose. The inside is smooth, operators tell us it is "less grabby", and it lasts far longer than that cheap plastic stuff you have been using.

We only use the heavier 3/8" x 25' poly braid rope.



Part No. AW3010

Standard yellow black tiger tail, but in a smaller 2" diameter, ideal for use with camera cables and small hoses. Use with our EC1 Easement Cart.

### "Tough Cover" Leader Hose

We use a special polymer Super Tough Cover hose to manufacture our leader hoses. Durability is much greater than standard leader hoses, making these a great value. Use leader hoses to give operators a foolproof visual warning when the nozzle is close to the manhole. An important safety device!



Part No. AW3008

### Leader Hose Part Numbers

Hose Size	Rated Pressure	10'	15'	20'	25'
1/2"	4250 psi	AW4005-10	AW4005-15	AW4005-20	AW4005-25
3/4"	3125 psi	AW4006-10	AW4006-15	AW4006-20	AW4006-25
1"	2500 psi	AW4007-10	AW4007-15	AW4007-20	AW4007-25

## Nozzle Extensions

Our nozzle extensions are constructed from high quality schedule 80 pipe, fully welded to machined fittings. 3/8" hardened steel runners mean our tools outlast others. Machine cut and polished threads, have no sharp edges which can cut an operator's skin or gore in the nozzle. Two diameters available: Large 5-3/8" and Small 3-7/8"



### Flat Wire Style

Featuring 3/8"sewer rod runners						
Hose Size	1/2"	1/2"	3/4"	3/4"	1"	1"
Part No.	AW4190	AW4191	AW4192	AW4193	AW4194	AW4195
Pipe Range	4 and up	6 and up	6 and up	8 and up	6 and up	8 and up
Dimensions	12"x 3-7/8"Dia	12"x 5-3/8"Dia	15"x 3-7/8"Dia	15"x 5-3/8"Dia	15"x 3-7/8"Dia	15"x 5-7/8"Dia



### Football Wire Style

Featuring 3/8"sewer rod runners				
Hose Size	3/4"	3/4"	1"	1"
Part No.	AW4196	AW4197	AW4198	AW4199
Pipe Range	6 and up	8 and up	6 and up	8 and up
Dimensions	15"x 3-7/8"Dia	15"x 5-3/8"Dia	15"x 3-7/8"Dia	15"x 5-3/8"Dia



### Finned Steel Style

Featuring 3/16"thick abrasion resistant steel runners				
Hose Size	3/4"	3/4"	1"	1"
Part No.	AW4200	AW4201	AW4202	AW4203
Pipe Range	6 and up	8 and up	6 and up	8 and up
Dimensions	15"x 3-7/8"Dia	15"x 3-7/8"Dia	15"x 3-7/8"Dia	15"x 3-3/8"Dia

CAUTION! Nozzle extensions are a safety device and are highly recommended in all pipe cleaning operations. Nozzle extensions will prevent a nozzle from turning around in the pipe, possibly causing serious injury and even death, if a nozzle were to get out of a pipe. Protect your nozzles and your operators, insist on using nozzle extensions or proofers as Standard Operating Procedure (SOP).



### 1-1/4" Sewer Rod Nozzle Extensions

Featuring 3/8" Sewer Rod Runners		
Hose Size	1-1/4"	1-1/4"
Part No.	AW4206	AW4207
Pipe Range	8" and up	15" and up
Dimensions	25"L x 5-1/2" Dia	25"L x 11-1/4" Dia

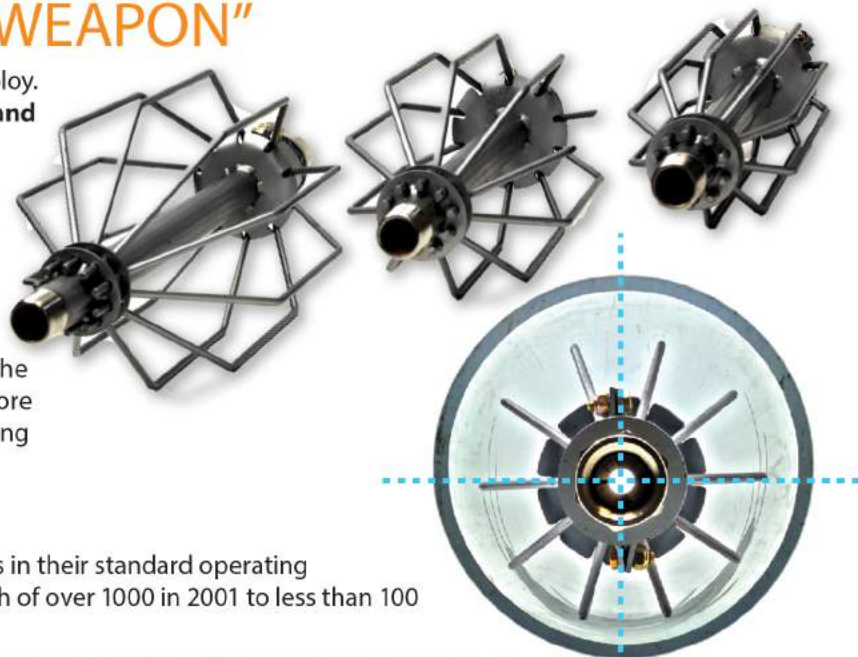


## Proofers

### TRULY, THE "SECRET WEAPON"

One of the smartest tool innovations we can employ. **Proofers are designed to "prove" that sewer and storm drains are free of major debris, offsets, protruding laterals, and are not collapsing.** Our proofers have (10) 1/4" hardened spring steel runners, which are fixed on one end, and floating on the other end. This allows the assembly to "give" slightly when encountering obstructions, which aids in retrieving the tool if it becomes lodged. They are more closely sized to the actual pipe ID than nozzle extensions, and therefore center the nozzle more precisely for better cleaning performance with all nozzle designs.

- Reduce your SSO's by using proofers as SOP
- The City of Los Angeles has adopted proofers in their standard operating procedure and has reduced SSO's from a high of over 1000 in 2001 to less than 100 per year currently.



Centers the nozzle more precisely for better cleaning performance! .....

Hose Size	3/4"	3/4"	3/4"	1"	1"	1"	1"
Pipe Range	6 and up	8 and up	10 and up	6 and up	8 and up	10 and up	12 and up
Part No.	AW4001-6	AW4001-8	AW4001-10	AW4002-6	AW4002-8	AW4002-10	AW4002-12
Dimensions	19 X 5.25	19 X 7.25	21 X 9.25	19 X 5.25	19 X 7.25	21 X 9.25	23 X 11.25
Replacement Runner	AW4003-6	AW4003-8	AW4003-10	AW4003-6	AW4003-8	AW4003-10	AW4003-12

### "Shorty" Wire Style

This popular, shorter length, 10" long extension, allows for easy removal from sewer lines, while still affording full protection to the nozzle.



Hose Size	3/4"	1"
Part No.	AW4204	AW4205
Pipe Range	8 and up	8 and up
Dimensions	10" x 5-3/8" Dia	10" x 5-3/8" Dia

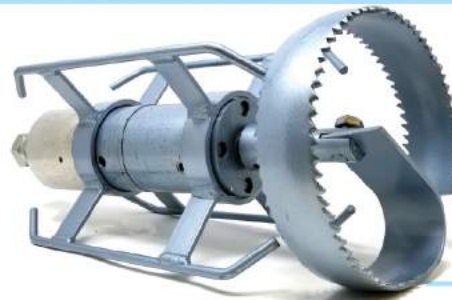
"Cleaning effectively is the all important goal. Maximizing performance is key."



# HYDRAULIC ROOT CUTTER KIT AND ACCESSORIES



Part Number	Hydraulic Root Cutter (HRC) Part/Kit
AW4400	HRC Motor Assembly
AW4403	HRC Seal Washer
AW4404	High Thrust Nozzle
AW4400-K6	HRC 6" Kit
AW4400-K8	HRC 8" Kit
AW4400-K10	HRC 10" Kit
AW4400-K12	HRC 12" Kit



## Skids

Properly centralize your root cutter, and maximize saw efficiency and blade life.



10" skid shown

## Root Saws

Our Super Duty root saws are manufactured from hardened tool steel, which is 25% thicker than our competitors standard blades. The concave design helps to protect the pipe walls from accidental damage. Our blades are heat treated to the ideal hardness, yielding the perfect combination of hardness, for exceptional wear, and ductility, for toughness in use.



Easy mount design - No nuts & bolts!  
Just thread the thrust nozzle onto the tail and go to work!

Demo on



## Chucks

Chucks (left to right) root saw, spring blade and combination chuck (holds a root saw and spring blades).

Chuck Style	Part No.
Root Saw Chuck	AW2104
Spring Blade Chuck	AW2107
Combination Chuck	AW2108

## Spring Blades

Our unique spring blades are manufactured from hardened spring steel. The cutting blades are sharp, and feature ground notches, to catch the smaller roots that try to slide by the blade. **We are confident you will love our blades so much, they will become your new standard.**



## HRC Tools

Pipe Size	Skids	Root Saws	Spring Blades
3"	-	-	-
4"	-	-	-
6"	AW4409-6	AW2004-6	AW2111-6
8"	AW4409-8	AW2004-8	AW2111-8
10"	AW4409-10	AW2004-10	AW2111-10
12"	AW4409-12	AW2004-12	AW2111-12
15"	-	-	AW2111-15

## RQC System

Our **Rodding Quick Coupling system** employs a threadless quick coupling which can be installed on continuous rod, easily, in just seconds. See our YouTube video at Workhorse Nozzles & Tools

Threadless Quick  
Coupling



Continuous Sewer Rod  
Connection



Drive Spuds



Adapter Rod  
Connection



Combination Chuck  
with Reversible Cone

Square Bar Corkscrew Chuck



[Corkscrew and chuck shown assembled]

Auger Chuck



[Auger and chuck shown assembled]

Root Saw Chuck



[Root Saw and chuck shown assembled]

Spring Blade Chuck



[Spring Blades and chuck shown assembled]



Chuck + Root Saw + Spring Blades Assembly



Cone is reversible for rodder "push operation"

See Page 11 & 12 for part numbers



## Chucks

Our chucks will fit most industry hydraulic root saws and drive spuds.

Note: We use a 5/16" hardened cap screw to mount our chucks.



### Threadless Quick Coupling

Our Rodder Quick Coupling makes it easy to reterminate continuous sewer rod and change out tools.

Demo on



Rod Size	5/16	3/8"	.393"
Part No.	AW2101	AW2102	AW2103



### Drive Spud

Allows easy connection of the chucks to rodding sets.

Rod Size	5/16	3/8"
Part No.	AW2109	AW2110



### Root Saw Chuck

Part No. AW2104

Connect our chucks to a hydraulic root cutter, or the EZ Chuck system, to connect to a rodder, or one of industry standard hydraulic root cutters with 1" drive spuds and 5/16" or larger bolt hole.



### Auger Chuck

Part No. AW2105



### Square Bar Corkscrew Chuck

Part No. AW2106



### Spring Blade Chuck

Part No. AW2107

Our Spring Blade Chuck securely locks our Spring Blades, providing industry leading torque and performance. Operators tell us our system is the best performing in the industry. Strict tolerances + hardened separator washers = better performance.



### Combination Chuck

Part No. AW2108

Designed for use with both the spring blades and a root saw together. The spring blade chuck portion can be used in the standard configuration with the blades facing forward, or it can be reversed so the blades face back toward the root saw, when used on a rodder.

## Chuck Attachments



### Root Saw Blades

Our Super Duty root saws are manufactured from hardened tool steel, which is 25% thicker than our competitor's standard blades. The concave design helps to protect the pipe walls from accidental damage. Our blades are heat treated to the ideal hardness, yielding the perfect combination of hardness, for exceptional wear, and ductility, for toughness in heavy use.

Part Size	6"	8"	10"	12"
Part No.	AW2004-6	AW2004-8	AW2004-10	AW2004-12



### 3 Spoke Root Saws

The three spoke design gives these larger diameter saws some much needed rigidity. The open design allows for flexing at offset joints. Includes chuck.

Part Size	15"	18"	24"
Part No.	AW2005-15	AW2005-18	AW2005-24



### Shark Tooth Root Saws

This root saw blade has thin, razor-like teeth.

Part Size	6"	8"	10"	12"
Part No.	AW2100-6	AW2100-8	AW2100-10	AW2100-12



### Augers

Super strong, flat section augers are the toughest tools for ripping root and blockage masses from pipes. The spiral taper design locks onto roots, wipes and other obstructions.

Part Size	3"	4"	6"	8"	10"
Part No.	AW2001-3	AW2001-4	AW2001-6	AW2001-8	AW2001-10



### Square Bar Corkscrews

Use the Square Bar Corkscrews to quickly rip into and tear apart blockages. Try one which is one size under the pipe size to be cleared.

Part Size	3"	4"	6"	8"	10"
Part No.	AW2002-3	AW2002-4	AW2002-6	AW2002-8	AW2002-10



### Heavy Duty Square Bar Corkscrews

The newest addition to our corkscrew line - A super tough, heavier duty square bar corkscrew.

Part Size	6"	8"
Part No.	AW2003-6	AW2003-8



### Spring Blades

Our years of experience have taught us that **this one blade is far and away the better performer when it comes to cleaning pipe**, the flat style, full size blade, featured here. Our blades are sharpened on both the leading and trailing edges to cut in both directions (some rodder operations), and our exclusive serrated edges "catch" smaller roots, stopping them from simply sliding over the blade, producing a more complete cutting action.

Part Size	6"	8"	10"	12"	15"
Part No.	AW2111-6	AW2111-8	AW2111-10	AW2111-12	AW2111-15

\*Slightly oversized for a very good scrape along the pipe wall.



## Rod Turning Tools



### Pull Out Turning Handle

This tool has a locking pin to lock into sectional rod couplings, allowing the operators to push, pull and turn hand rods.

Rod Size	5/16"	3/8"
Part No.	AW2006	AW2007



### Coupling Assembly Wrench

Use two of these wrenches together to assemble coupling and nuts. The turned down dowel on the handle fits perfectly into the center hole of standard couplings.

Rod Size	5/16"	3/8"
Part No.	AW2060	AW2061



### Coupling Assembly Wrench, Spring Pin Type

For a bit more secure grip on your coupling, use this wrench with one of our coupling assembly wrenches above to assemble nuts & couplings. The spring loaded pin securely locks onto the coupling for a solid grip.

Rod Size	5/16"	3/8"
Part No.	AW2008	AW2009



### Push-Pull Tool

The slot in the center collar slides over a sectional rod and allows operators to push or pull a string of sectional rods. Slide it over the coupling from the outside of the string to push, reverse it to pull.

Rod Size	5/16"	3/8"
Part No.	AW2010	AW2011



### Pick Up Tool

Used to retrieve rods which have broken in the pipe. The spiraled coil tightens around rods to hook the coupling, allowing for retrieval of the lost rods.

Rod Size	5/16"	3/8"
Part No.	AW2012	AW2013



### Adapter Rods

This 8" long rod is used to connect standard 3/8" & 5/16" tools to larger continuous rod sizes. One nut has fine, left hand threads, and the other has coarse, right hand threads. They act as "break away" safety devices when a much larger continuous rod is used.

Rod Size	5/16"	3/8"
Part No.	AW2014	AW2015
Short Rod*	AW2014-S	AW2015-S

\*Same construction as our classic 8" adaptor rods, just 4.5" long.



### Rod Guide-Hose Brace

The Rod Guide Hose Brace is designed to hold the rod guide hose in the proper position at the sewer pipe invert. In the manhole. Length is adjustable 44"- 66".

With Chain	Steel ring
AW2200	AW2201



### Spear Point Cutters

Used to punch a hole through just about any blockage, including roots, rags, paper, bottles & cans.

Part No.	AW2031
----------	--------

## Rod Guide Hose

Our light weight rod guide hose has aluminum fittings, a flexible steel liner, and a tough, wear resistant lightweight hose covering.

Hose Length	10'	15'	25'
Part No.	AW2016-10	AW2016-15	AW2016-25



## Continuous Rod Bending Kit

This simple but effective tool allows you to put the correct bend on the end of your continuous rod in the field or shop. Makes the correct hook to fit in your adapter couplings. Always put the left hand nut on couplings first.

\*Also used with our RQC and Drive Spuds on pages 8-10.

Rod Size	5/16"	.375	.393	.415	.461
Part No.	AW2017	AW2018	AW2019	AW2020	AW2021



## Sectional Sewer Rods

We use the finest steel alloy, selected for toughness and flexibility = greater power transmission, and longer life. For premium rods and couplings, trust Advanced Work Horse Tools.

Diameter	5/16"	5/16"	3/8"	3/8"
Length	36"	39"	36"	39"
Part No.	AW2022	AW2023	AW2024	AW2025
Box of 50	AW2022-50	AW2023-50	AW2024-50	AW2025-50



## Continuous Sewer Rods

Our continuous sewer rod is made from the perfect combination of ductility and tensile strength. Using a material which is too hard causes the rod to work harden too quickly, becoming brittle early in the life cycle, and break off continually in the line, causing operator frustration and increased operating costs.

Diameter	.375	.393	.415	.461
Part No.	AW2026	AW2027	AW2028	AW2029

\*Custom Lengths Available



## Porcupine

This is a heavy duty finishing and scraping tool designed to scrape the pipe walls after the line has been cleared. Strong 1/4" wire rope spikes, rub against the pipe wall, and is best used in a pull back mode. Used with our rodder drive spud or rodder quick coupling.

Pipe Size	6"	8"	10"	12"	15"
Part No.	AW2030-6	AW2030-8	AW2030-10	AW2030-12	AW2030-15









# Check-out our Industry Leading Nozzles Catalog Available at your dealer

**ADVANCED WORK HORSE NOZZLES CATALOG 2019**

**Advanced Work Horse NOZZLES & TOOLS**

**Maximize Your Horsepower**

PLEASE SUPPORT YOUR LOCAL WORKHORSE DISTRIBUTOR

Visit us on Social Media:

Advanced Infrastructure Technologies, the Advanced logo, Work Horse Nozzles and Near Diamond Hard are all trademarks of Advanced Infrastructure Technologies. 2019 Copyright Advanced Infrastructure Technologies, LLC 2014-2019, all rights reserved.

**Introduction**

**Daily Maintenance**

**Nozzle Efficiency & Calculation**

**Everyday, Superior Cleaning - Economical Options**

**General Cleaning, High Poll Solutions**

**Specialty Nozzles**

**MAKE IT YOUR WAY!**  
WE WILL CUSTOM CONFIGURE A KIT - WITH YOUR CHOICE OF NOZZLES. (All Quality Value Last Included)  
Please Contact Your Dealer

**Maximize Your Horsepower**

PLEASE SUPPORT YOUR LOCAL  
**NOZZLES & TOOLS**  
WORKHORSE DISTRIBUTOR



Call: 1-800-362-0240  
Email: [sales@mtechcompany.com](mailto:sales@mtechcompany.com)



Scan using your  
phone's camera

**Product Disclaimer:** As part of our continuous product improvement effort, the size, shape, finish and minor variations in dimension of the tools depicted are continuously evolving as we seek to provide even better performance. Therefore the designs shown are for reference purposes and are subject to change at any time without notice. Thank you for your understanding, and please keep your input coming! Your experience is helping us to continuously improve our offering.

Advanced Infrastructure Technologies, the Advanced logo, Work Horse Nozzles and Near Diamond Hard are all trademarks of Advanced Infrastructure Technologies. 2019 Copyright Advanced Infrastructure Technologies, LLC 2014-2018, 2019 all rights reserved.