



## ZOOMX II MANHOLE CAMERA

"The Standard of the Industry"

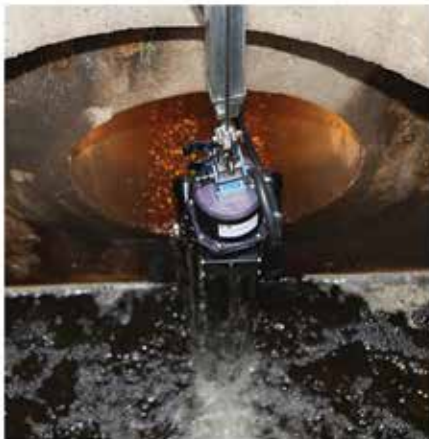


*PRECISE manhole inspection to help prioritize and identify sewer issues!*



WITH THE ZOOMX II MANHOLE CAMERA, COLLECTION SYSTEM OWNERS AND OPERATORS CAN NOW REDUCE SYSTEM OPERATION / MANAGEMENT COSTS AND QUICKLY IDENTIFY HIGH-RISK AREAS OF THE WASTEWATER / STORMWATER SYSTEM.

Make the best use of your time and money by using the ZOOMX II Manhole Camera to inspect your manholes and mainline pipes. The camera offers unparalleled imaging technology with a 25:1 optical zoom that is stabilized and remotely controlled via a telescopic boom to produce picture clarity with enhanced detail up to 300 ft!



# ZOOMX II Manhole Camera

## Features & Benefits

- Manhole inspection with live video to help prioritize and identify sewer issues.
- Swiftly locate problem areas of the pipe.
- Quickly identify maintenance requirements and identify structural defects to prevent sewer overflows.
- Helps you comply with CMOM & GASB34 requirements.
- Designed for use in pipes 6" in diameter and up with the ability to illuminate and inspect manholes and large diameter pipes at distances up to 300'.
- Designed to provide close-up views of manholes and pipes.
- Base unit consists of the following: boom, mast, controller, camera, and integral/external lighting.
- Designed to gage the manhole depth.
- Mast is designed to position the camera 50ft below the surface of the road.
- Optional compass is available to support GIS systems.



## System Equipment:

### CAMERA

- Optical Zoom Range: 25x; Digital Zoom Range: 1x through 12x
- Total effective zoom ratio: 300x
- Remotely controlled from the control console.
- The mounting fork is designed to pan the camera head 360 degrees continuously, tilt mechanically 35 degrees up, 90 degrees down, and tilt optically 166 degrees; camera forks are rounded or chamfered and do not exceed 5 inches in diameter.
- The camera imager, optics, mechanics, and electronics are housed in a damage resistant, waterproof, rugged enclosure.

### LIGHTING

- Camera Integral LED Lighting - The camera includes (4) LED spot lights and one (1) flood light centered above the lens:
  - Each of the five (5) lights are individually sealed to prevent water entry.
  - Four (4) LED spot lights have a total light output equivalent to 200 watts of halogen light.
  - One (1) LED flood light has a total light output equivalent to 50 watts of halogen light.
- Medium External Lightheads - The camera includes two (2) quick disconnect external lighthead assemblies, each lighthead assembly consisting of two lightheads on each side of the camera.
  - > The high performance lightheads provide a total of 340 watts of light, 170 watts per lighthead assembly.
  - > External lighting is designed to move relative to the camera lens to provide directional illumination.
- Large External Lightheads - Two quick disconnect large external lighthead assemblies for inspection of pipelines 18" diameter to 84".

