



JETEEYETM C A M E R A
Patent Pending

J e t C a m e r a S y s t e m



800.373.1318



JET EYETM CAMERA

Patent Pending

Benefits:

Measure Production:

Decision-makers can finally have a cleaning program that they can easily manage. Everything the operators are cleaning can be measured and evaluated with ease and simplicity.

Obtain Quality Information:

More often than not, the information about a problem is a guess at best. Jet Eye allows jet operators to know within minutes what kind of problem they are dealing with. Operators can drop Jet Eye in and shoot up the line, with no concern of whether the line is spotless or not.

Keep your crews Accountable:

Pipe Evaluation and troubleshooting has never been easier. Crews can record and measure exactly what was accomplished that day.

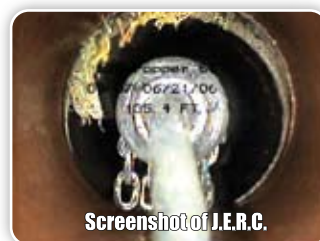
Recording Footage:

The video recording system that the Jet Eye utilizes is simple to operate. If you can run a remote, you can record your footage. The system uses a Digital Video Recorder (DVR) to store all footage (up to 75 hours). This recorder also allows operators to burn their footage to a DVD.

The Jet Eye system is compatible with all PC based reporting software systems.



Screenshot in pipe



Screenshot of J.E.R.C.

Water System Configurations:

There are 3 water systems available for the Jet Eye camera system:

- 4,000 @ 25 GPM (80 hp required)
- 3,000 @ 40 GPM (80 hp required)
- 3,000 @ 50 GPM (115 hp required)

3/4"

1/2"



Digital Video Recording: is all stored inside a single water tight case, Even the DVD burning!

Customer choice of chassis

Aluminum Tool Box: Many sizes available

Frame Rail Installation: The articulating hose reel is mounted on the chassis frame rails for system longevity

Jet Eye camera reel

Jetting Reel

Dual or Single Reel:

Both are available on trucks and trailers (see back of brochure)

7" Daylight Viewable Screen:

Stored in a weather-tight case to keep components protected

Aluminum Sun-Shield: The viewer for the LCD screen is adjustable for any height and provides an ideal location for operator (pendant remote not required for camera operation)

Digital Footage Counter: Hose guide and digital footage counter are combined. The footage is overlayed onto the screen allowing operators to focus on operation



7" LCD viewer with keyboard for text on screen all in a watertight box

Camera Skates:

There are many Jet/TV Skates available for the Jet Eye camera system. The spread of these skates allows for operation in lines as small as 6" and as large as 48" (may require the use of additional light head for larger pipe). All of the skates can be switched by simply removing a locking pin and disconnecting the video cable. A stainless steel carrier protects the camera head in and out of the cleaning environment to keep crews running.



24-48" Skate

12-24" Skate

8-12" Skate

6-8" Skate



Jet Eye Camera Head (Strait-view, 4-LED bulb light, auto-leveling, Stainless steel housing)

Standard Camera System Features

- 400 ft. jet hose (jet & TV bonded jet hose)
- 400 ft. jet hose
- 10 ft. leader hose
- Color CCD self uprighting camera w/ ball skid & camera connector
- 7" color LCD screen display
- 6-8" camera skate assembly
- 8-12" camera skate assembly
- Tool kit
- Pigtail connector kit

Optional Camera System Features

- Up to 1000 ft. jet hose (jet & TV bonded jet hose)
- Up to 800 ft. jet hose
- Infrared repeater remote system
- Extra 6-8" camera skate assembly
- Extra 8-12" camera skate assembly
- 15-30" Skate extensions
- Auxiliary 72 bulb (LED) lighthead (12-48" lines)
- Digital footage counter with overlay
- DV-R + DVD-R Digital recorder (mounted in protective case)

Single Reel



Dual Reel



Full Reel Enclosure



Watch while
you cut roots



Before



After



Parts & Service

The PipeHunter parts team is ready to ship the parts you need to stay out in the field. Call our parts department today and let us know how to serve your needs, 1.800.373.1318.

Dealer Network

Our growing dealer network provides service and parts across North America. Call us or log on to www.pipehunter.com to find out where your nearest dealer is located.



PipeHunter, Inc.
1617 Garden Rd.
Pearland TX, 77581
toll free: 800.373.1318 fax: 281.485.5953
www.pipehunter.com sales@pipehunter.com